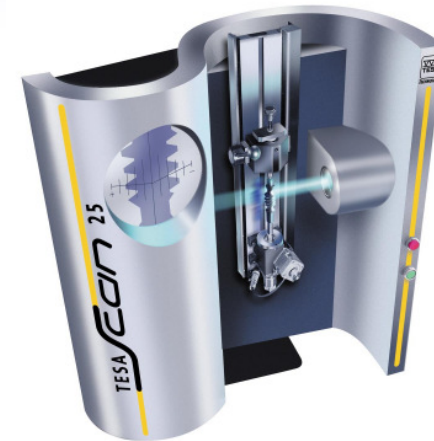
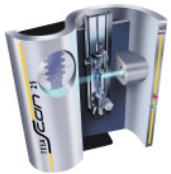


TESA Scan

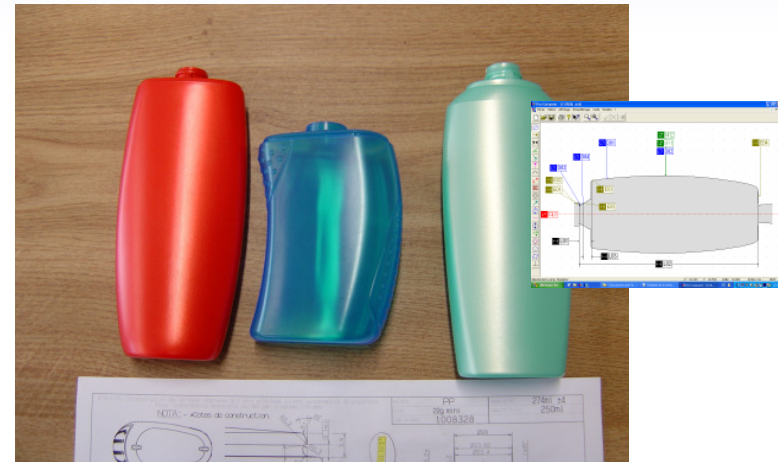


Show Case April 2006

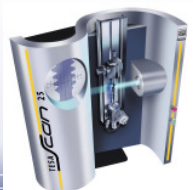
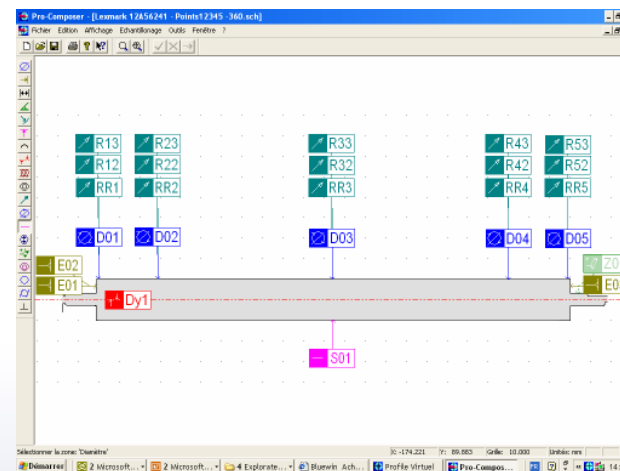


Reminderlast 2 show cases

Market segment: **Packaging industry**
 Customer: ---



Market segment: **Office automation**
 Customer: **LEXMARK-USA**



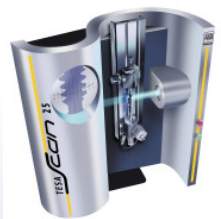
Bosch Turkey, Bursa plant

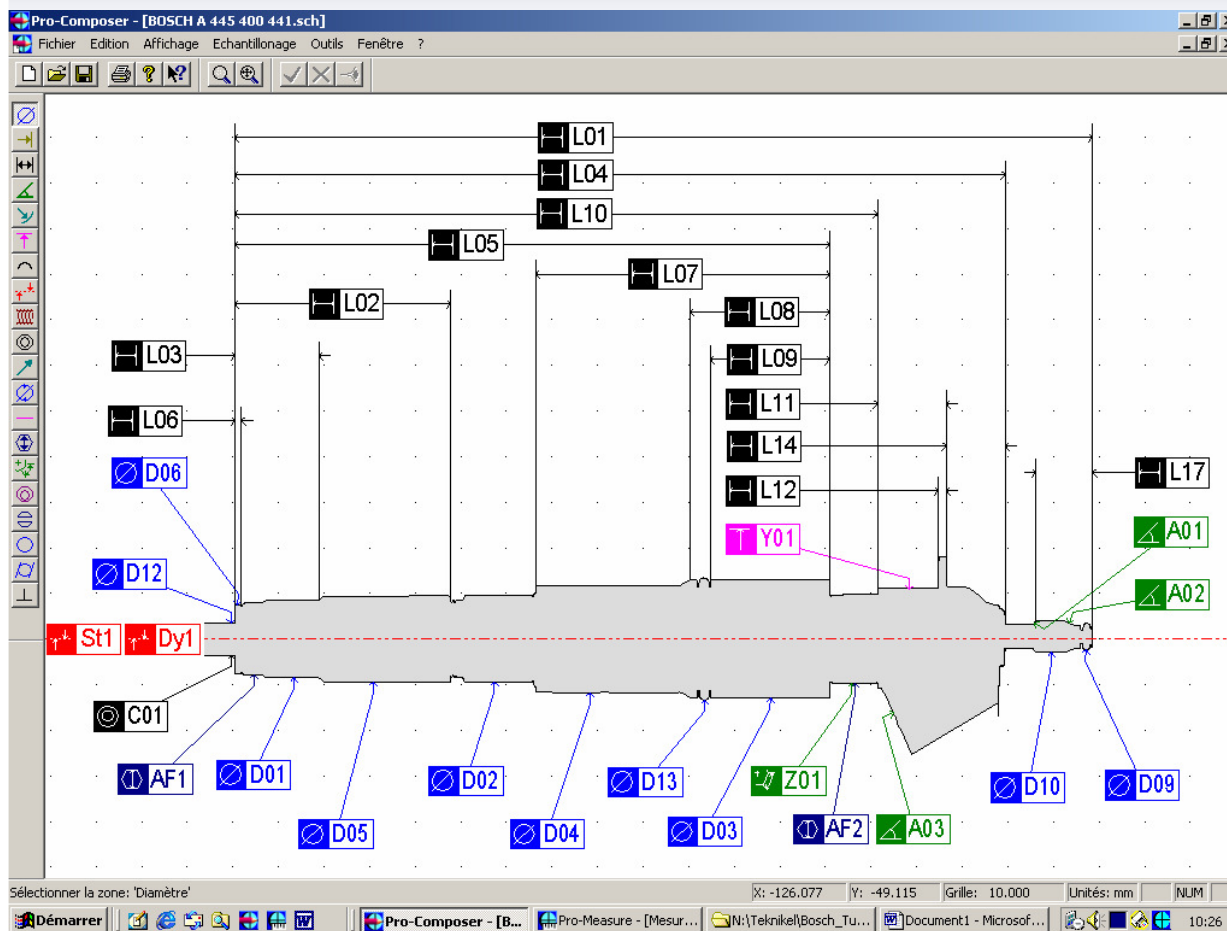
Market segment: automotive

Project: Diesel injector inspection



BMW, AUDI... etc





Pro-Measure - [Messung - BOSCH A 445 400 441]

Einzelwerte | Kumulierte Ergebnisse | Maßzone | Schema

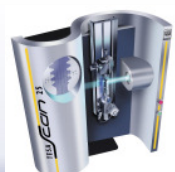
Teil-Nr.: BOSCH A 445 400 441

Einheit: mm, Grad

Messung gestartet: 18.03.2005 10:32:42 Messung beendet: 18.03.2005 10:33:38

Ergebnis: Fehler

#	M	Sv	Bezeichnung	Nennmaß	Istmaß	Abweich.	QT	UT	Unit	Toleranzgrenzen Karte
30	M03		Halbwinkel	72,000	70,676	-1,124	75,000	68,000	Gut	
4	AF1		Schlüsselweite	15,000	14,618	-0,182	15,500	14,500	Gut	
7	AF2		Schlüsselweite	14,800	14,788	0,018	14,800	14,700	Gut	
5	D01		Konzentrität	0,000	0,164	0,164	0,400	0,000	Gut	
3	D01		Ø Mittelwert	17,000	16,924	-0,021	17,000	16,890	Gut	
6	D02		Ø Mittelwert	18,000	18,935	-0,015	18,000	18,900	Gut	
15	D03		Ø Mittelwert	25,300	25,307	0,007	25,350	25,250	Gut	
16	D04		Ø Mittelwert	23,500	23,472	-0,028	23,700	23,300	Gut	
17	D05		Ø Mittelwert	18,900	18,839	-0,011	18,900	18,800	Gut	
18	D06		Ø Mittelwert	15,000	15,055	0,055	15,500	14,500	Gut	
24	D09		Ø Max Form	5,900	5,902	0,102	6,300	5,500	Gut	
25	D10		Ø Mittelwert	6,900	6,982	0,082	7,000	6,800	Gut	
29	D12		Ø Mittelwert	6,950	7,132	0,182	7,075	6,825	Fehler	
31	D13		Ø Max Form	26,750	26,727	-0,023	26,950	26,550	Gut	
8	L01		Länge	186,900	186,534	-0,366	187,700	186,100	Gut	
1	L02		Länge	45,800	45,634	-0,034	46,300	45,300	Gut	
2	L03		Länge	17,000	17,057	0,057	17,500	16,500	Gut	
9	L05		Länge	167,400	167,309	-0,141	167,800	167,000	Gut	
10	L06		Länge	128,400	128,625	0,525	129,000	127,500	Gut	
11	L08		Länge	1,500	1,465	-0,035	1,550	1,450	Gut	
12	L07		Länge	64,500	64,536	0,036	64,700	64,300	Gut	
13	L09		Länge	30,500	30,490	-0,010	30,800	30,200	Gut	
14	L11		Länge	26,200	26,090	-0,110	26,700	25,700	Gut	
19	L10		Länge	128,400	129,379	-0,021	129,300	128,300	Gut	
20	L11		Länge	15,000	15,050	0,050	15,500	14,500	Gut	
21	L12		Länge	1,500	1,702	0,202	2,000	1,000	Gut	
23	L14		Länge	13,000	12,680	-0,120	13,500	12,500	Gut	
27	L17		Länge	12,530	12,443	-0,087	12,630	12,430	Gut	
22	T		Rotation Minimum	10,950	10,957	0,007	11,100	10,800	Gut	



Project outputs with the TESA Scan 50 +

HEXAGON METROLOGY

José Chautems